

YEAR
1986 - 91
1986 - 90
1991

MODEL
INTEGRA
LEGEND
NSX

VIN APPLICATION
See VEHICLES
AFFECTED

BULLETIN NO.
95-011



Front Seat Belt Buckle Campaign (Supersedes 95-011, dated May 22, 1995)

BACKGROUND

The plastic button on Takata front seat belt buckles may break. Pieces from the broken button could fall into the seat belt buckle, causing it to not latch or not unlatch.

VEHICLES AFFECTED

Integra:

1986 - 90 - All

1991

3-door - Thru VIN JHMDA9...MS026676

4-door - Thru VIN JHMDB1...MS009150

Legend:

1986 - 90 4-door - All

1987 - 90 Coupe - All

NSX:

1991 - Thru VIN JHMNA1...MT001507

CUSTOMER NOTIFICATION

Owners of affected vehicles will be contacted by mail. The owner will be asked to take the vehicle to a dealership for repair or updating. The text of the customer letter is at the end of this service bulletin.

CORRECTIVE ACTION

Carefully inspect the front seat belt buckles for proper function and cracked or chipped release buttons. Replace or modify the buckles accordingly.

1. Push the seat belt latch plate into the buckle. They should latch together with a sharp click. Push the PRESS button to release the latch plate from the buckle. It should release with a sharp click and the latch plate should pop out of the buckle.

- If both buckles latch and unlatch properly, continue to **Button Inspection**.
- If either buckle does not latch or unlatch properly, go to **Seat Belt Buckle Replacement**.

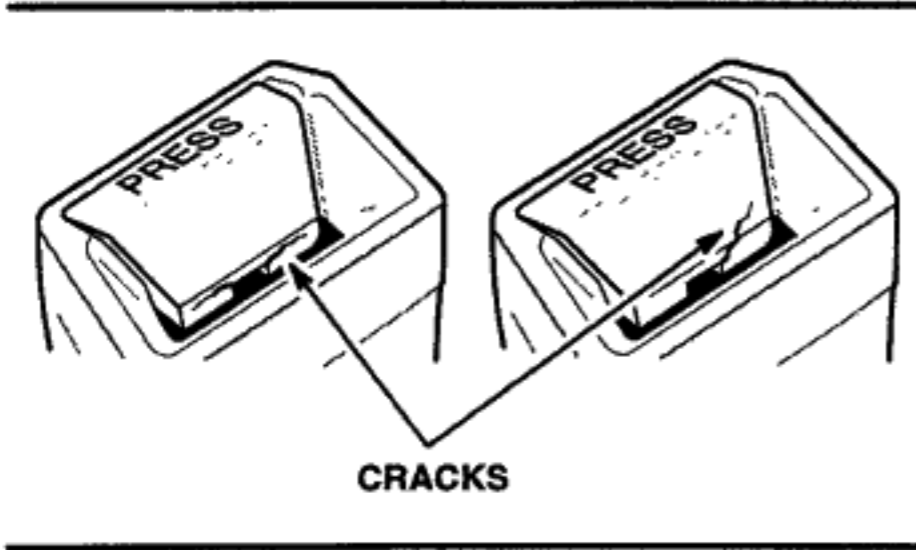
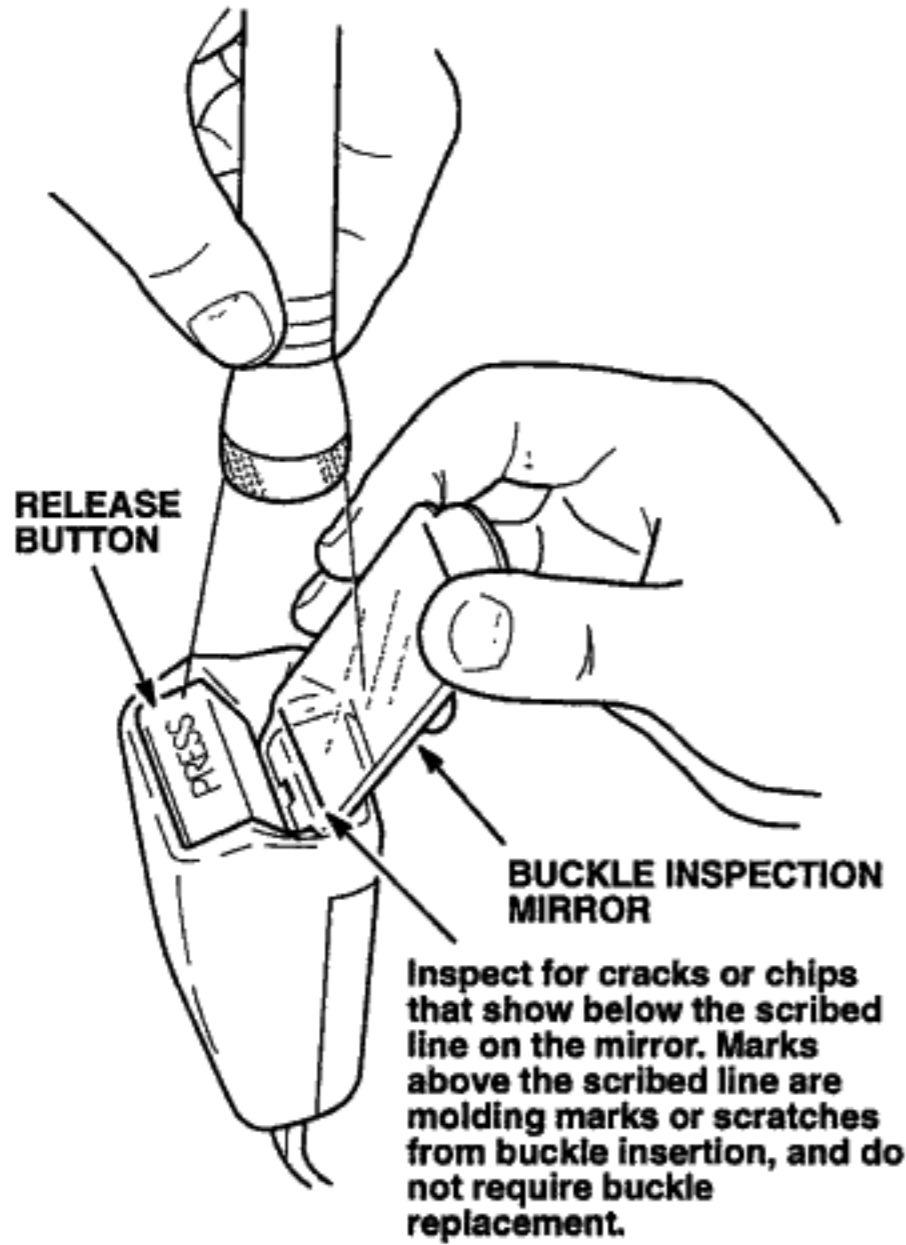


Button Inspection

1. Wet a cotton swab with a five percent soap and water solution. Clean the inside edge of the release button.



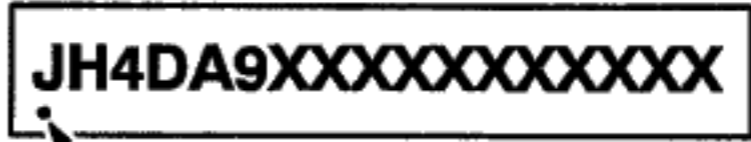
- Using the Buckle Inspection Mirror (see TOOL INFORMATION) and a bright light, examine the release button for chips or cracks.



- If either front buckle assembly has a chipped or cracked release button, go to **Seat Belt Buckle Replacement**.
- If the front buckle assemblies are in good condition, go to **Seat Belt Buckle Guide Installation**.

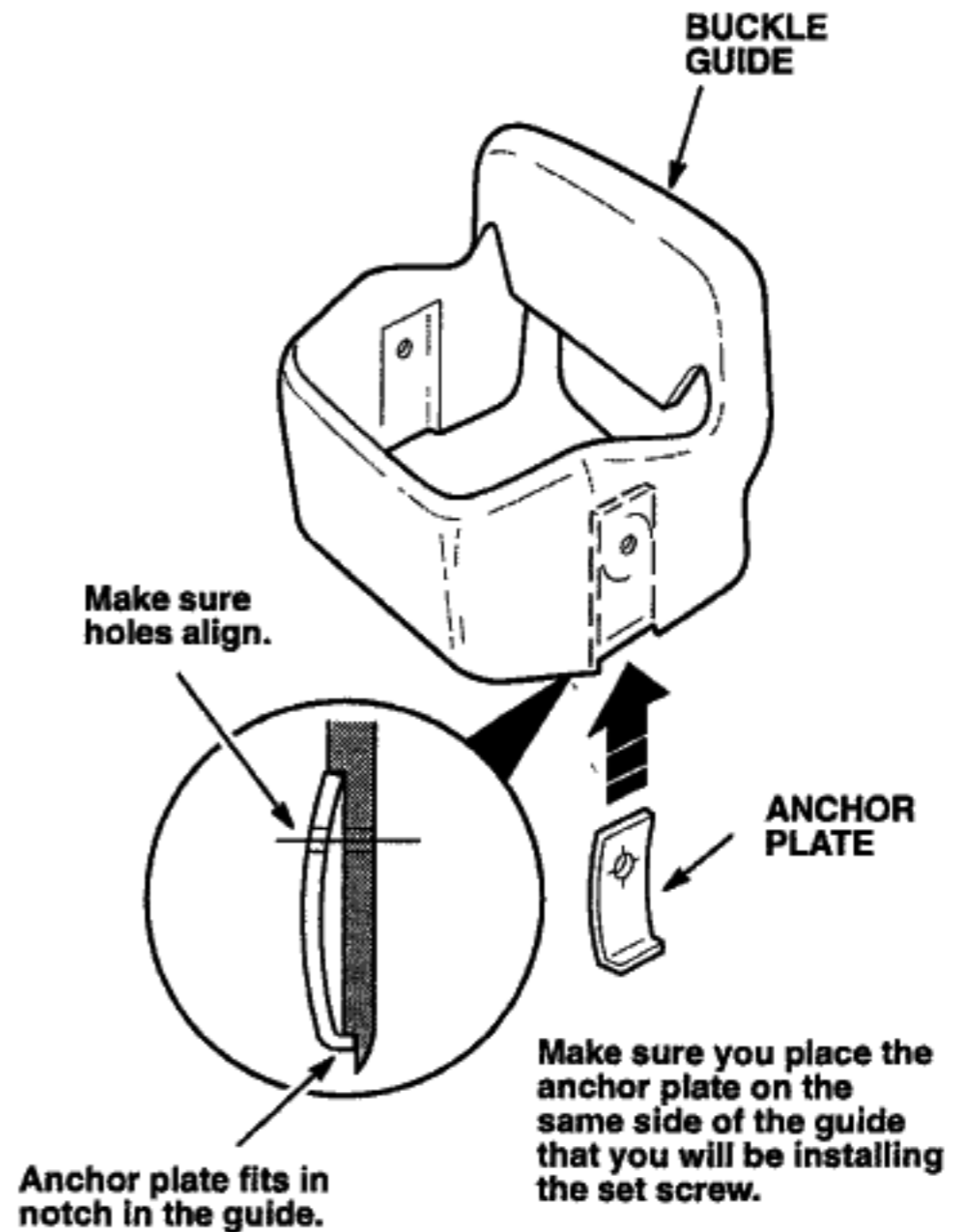
Seat Belt Buckle Replacement

- Remove both front seat belt buckle assemblies. Refer to section 20 of the appropriate service manual.
- Install the new buckle assemblies. Refer to Parts Information Bulletin B95-0011 for part numbers and applications.
- Center-punch a completion mark below the first character of the engine compartment VIN.



Seat Belt Buckle Guide Installation

- Select the proper buckle guide kit. Place the anchor plate inside the buckle guide. Make sure the hooked end fits inside the buckle guide, and that the holes in the anchor plate and the guide line up.

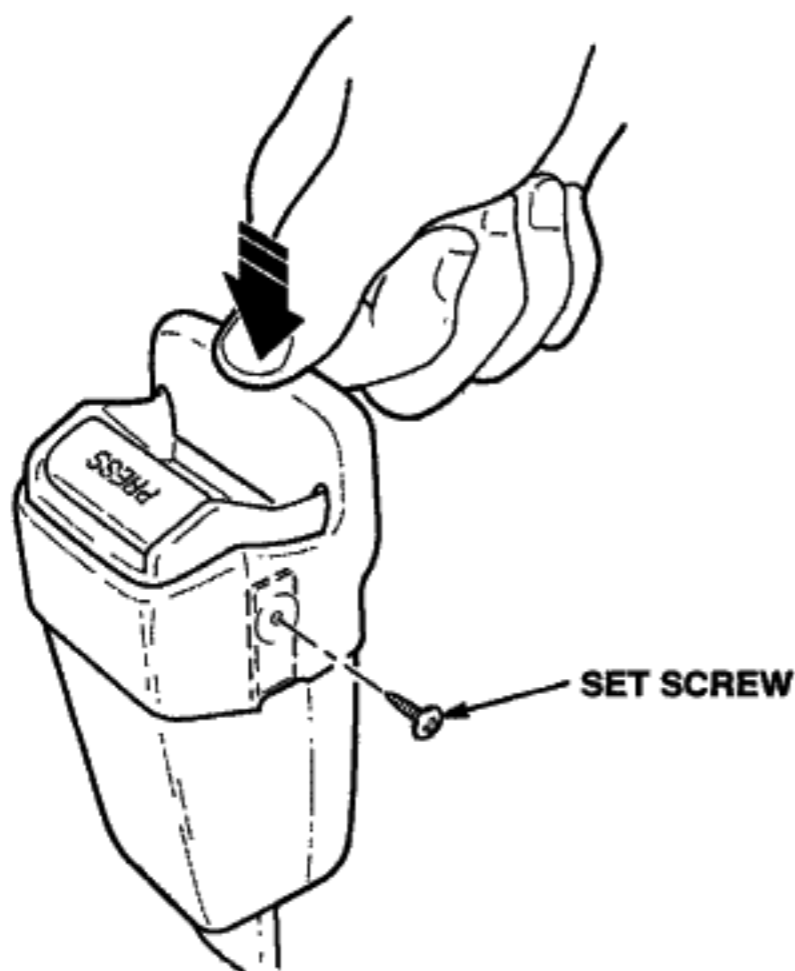


2. While holding the anchor plate in position with your finger, slide the buckle guide onto the buckle.



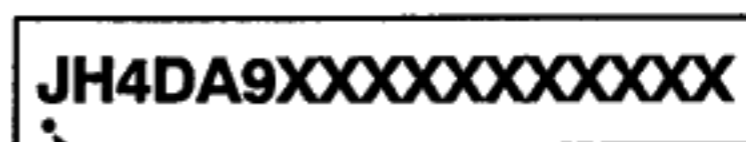
3. Use a screwdriver with a magnetic tip to install a set screw in the buckle guide on the same side that you installed the anchor plate. As you tighten the set screw, push down on the buckle guide to make sure it is fully on the buckle.

NOTE: Tighten the screw by hand or with a low-torque battery-operated screwdriver. A pneumatic or high-torque screwdriver will strip the guide and anchor plate.



4. Repeat steps 1 through 3 on the other front seat belt buckle.

5. Center-punch a completion mark below the first character of the engine compartment VIN.



Center-punch a completion mark here.

TOOL INFORMATION

Buckle inspection mirror:
Call American Honda Special Tools
at (800) 346-6327

PARTS INFORMATION

Seat belt buckle assembly:
See Parts Information Bulletin B95-0011

Front seat belt buckle guide kit A:
Black – P/N 06850-SH2-305ZA
Brown – P/N 06850-SH2-305ZB
Ivory – P/N 06850-SH2-305ZC

Front seat belt buckle guide kit B:
Black – P/N 06850-SH1-305ZA
Brown – P/N 06850-SH1-305ZB
Ivory – P/N 06850-SH1-305ZC

Front seat belt buckle guide kit C:
Black – P/N 06850-SE3-305ZA
Brown – P/N 06850-SE3-305ZB

See *Parts Information Bulletin B95-0010* for information on matching guide kits to interior colors.

Guide Kit Application – Legend

Year and Model	Kit
1986 – 87 4-door	C
1988 – 90 4-door	A
1987 2-door	C
1988 – 90 2-door	A

Guide Kit Application – Integra

Year and Model	Kit
1986 – 87 All	C
1988 – 89 All	A
1990 – 91 All	B

Guide Kit Application – NSX

Year	Kit
1991	A

WARRANTY CLAIM INFORMATION

Buckle Replacement – All 3-point active (non-motorized) seat belts

MODEL	TEMPLATE ID	DESCRIPTION	FLAT RATE TIME
1986 – 89 Integra	J95A	854115 – Replace both front seat belt buckle assemblies	0.3 hour
1986 – 90 Legend	J95B	854116 – Replace both front seat belt buckle assemblies	0.7 hour
1991 NSX	J95C	854117 – Replace both front seat belt buckle assemblies	0.5 hour

Failed P/N: Integra, Legend – 04813-999-999
 NSX – 04816-SL0-A02ZA

Defect code: 712

Contention code: J95

Buckle Replacement – All 2-point passive (motorized) seat belts

MODEL	TEMPLATE ID	DESCRIPTION	FLAT RATE TIME
1990 – 91 Integra	J95D	854118 – Replace both front seat belt buckle assemblies	1.0 hour

Failed P/N: 04849-999-999

Defect code: 712

Contention code: J95

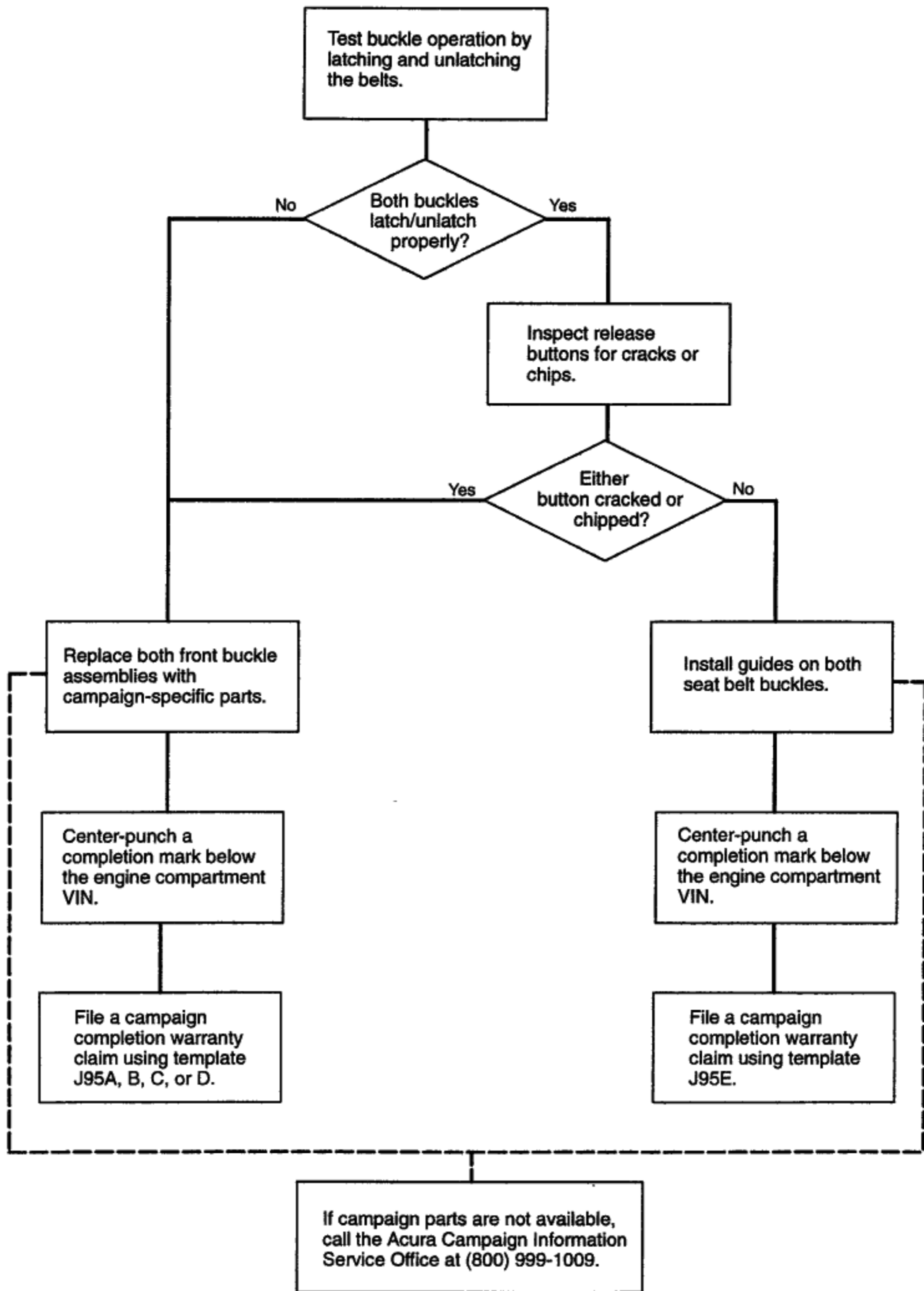
Buckle Guide Installation – All Models

TEMPLATE ID	DESCRIPTION	FLAT RATE TIME
J95E	854119 – Install front seat belt buckle guides, all models	0.2 hour

Failed part: P/N 06850-999-999

Defect code: 712

Contention code: J95



Example of customer letter:

Important Safety Recall Notice

Dear Acura Owner:

This notice is sent to you in accordance with the defect provisions of the National Traffic and Motor Vehicle Safety Act.

The Reason For This Notice

Honda has determined that front seat belt buckle release buttons have broken, and others may break in the future, in some 1986 – 91 Acura cars equipped with seat belts made by the Takata Corporation. These seat belt buckle release buttons are made of red plastic, and are marked "PRESS." If a button breaks, pieces may fall into the buckle assembly. If this occurs, the buckle may not operate properly, thereby creating a safety risk.

To prevent this problem from occurring, Acura will replace all broken front seat belt buckles, free of charge. In addition, Acura will modify all unbroken buckles manufactured by Takata to prevent future button breakage.

Why Seat Belts Are Important

If your seat belt buckle is broken or does not operate properly, you should have it replaced as soon as possible. Seat belts are the most important part of your car's safety equipment. Acura urges you to wear your seat belt whenever you drive, and to make sure that your passengers also wear theirs. If you do not wear your seat belt, your chances of being killed or seriously injured during a collision are much higher than if you are wearing a seat belt. That is why seat belt use is required by law in almost every state.

What You Should Do

Call any authorized Acura dealer and make an appointment to have your car repaired. If either release button shows any sign of breakage or cracking, or if either buckle fails to operate properly, the dealer will replace the buckle, free of charge.

Even if both front seat belt release buttons appear to be in good condition, and both buckles operate properly, your seat belt buckles will need to be modified to prevent future button breakage. Modification of the seat belt buckles will be free of charge and parts are now available.

Replacement or modification of the seat belt buckles will take less than half an hour; however, the dealer may need to keep your car for a longer period because of their workload. Please call for an appointment.

If You Have a Problem

If your Acura dealer is unable to, or fails to, make the necessary repairs or replacements, free of charge, please contact:

Acura Campaign Information Service Office
American Honda Motor Co., Inc.
1919 Torrance Boulevard
Torrance, CA 90501-2746

The toll-free number is (800) 999-1009.

You may also contact:

Administrator
National Highway Traffic Safety Administration
400 Seventh Street, S.W.
Washington, D.C. 20590

or call the toll-free Auto Safety Hotline at (800) 434-9393 (Washington D.C.-area residents may call [202] 366-0123).

Warranty Reminder

For safety, we urge you to regularly check the condition of your seat belts. If you notice that a release button is broken or if you experience any problems with seat belt operation, contact your dealer immediately. Remember, Acura has a lifetime seat belt warranty that applies to every Acura automobile. It covers any seat belt component that fails to function properly during normal use (see your warranty booklet for details).

Special Notice to Lessors

Under Federal law, the lessor of a vehicle who receives this letter must provide a copy of it to the vehicle lessee(s). The lessor must also keep a record of the lessee(s) to whom this letter is sent, the date sent, and the applicable Vehicle Identification Number (VIN). (For the purposes of this notice, a lessor means a person or entity that in the last twelve months prior to the date of this notification has been the owner, as referenced on the vehicle's title, of any five or more leased vehicles. A leased vehicle is a vehicle leased to another person for a term of at least four months.)

Thank you for your cooperation. We are sorry for any inconvenience you might experience.

Sincerely,

AMERICAN HONDA MOTOR CO., INC.
Acura Automobile Division